



METPOINT®

precision instruments for compressed air monitoring





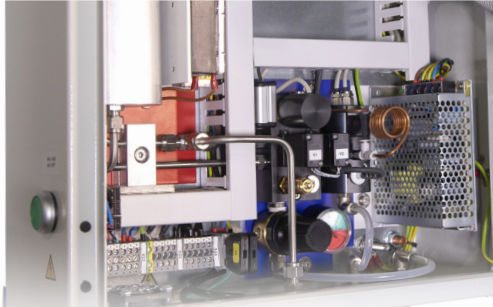
Accuracy and Quality

Accuracy and precision are both required for the best quality observations and to ensure you receive both, only the finest raw materials and most reliable sensing technologies are used.



Display

To interpret the data collected, we offer user friendly displays with a wide variety of configurable options from data logging to MODBUS output to remote monitoring, and more.



Purpose Built

Designed specifically to monitor compressed air and provide you with the widest range of purpose built instrumentation without any additional noise.



Quality Assurance

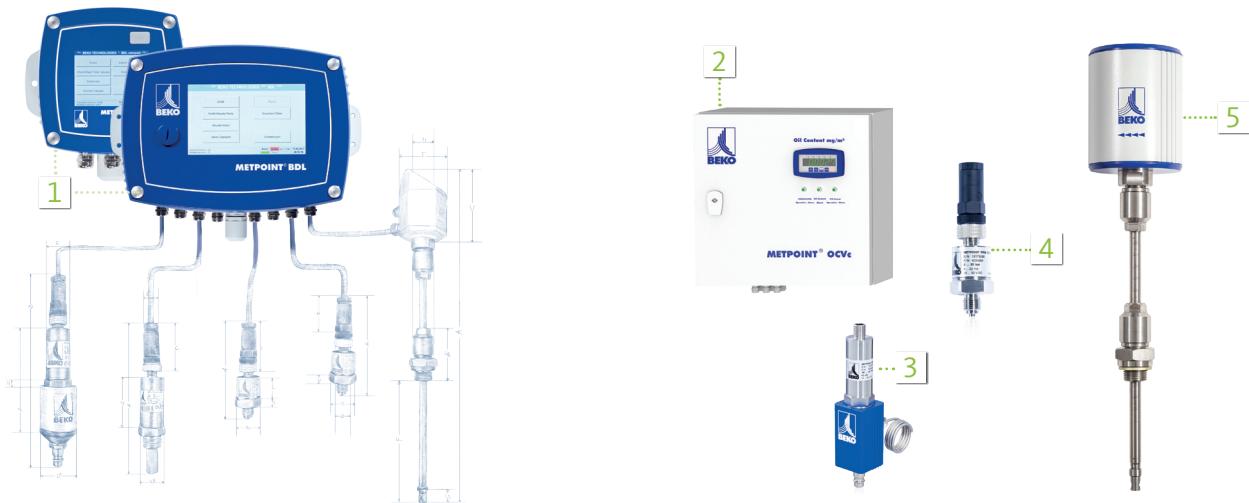
Reliable, condition independent measurements, that require no adjustment, and provide long-term trends are how you validate your processes.



Modular System

Our system grows and adapts as your needs change with everything designed to work in harmony with one another, even other brands.

How it Works



1. METPOINT displays are available in a wide variety of configurations ranging from single-value displays to sophisticated touch screen displays that can accommodate up to 2, 4, 8 or 12 sensor connections depending on the model. These displays can receive signals from either an analog or digital sensor. Data logging is available along with network connection capabilities all using the latest technologies and communication protocols, and the displays are designed to be expanded as your needs change.

METPOINT sensors are available in an equally wide variety of types offering users precision and versatility for every application, and are designed to work perfectly in combination with any of the available displays. All sensor and display combinations can easily be scaled up as your system and needs grow.

2. METPOINT OCV Compact is a revolutionary in-line hydrocarbon content sensor capable of detecting hydrocarbons down to a range as low as 0.003 mg/m³.
3. Dew point measurement utilizing capacitive polymer sensors provide users measurement accuracies to within ± 0.9 °F with the METPOINT DPM dew point sensor.
4. METPOINT PRM pressure sensors featuring stainless steel, thin-film technology are available up to 870 psig and will sense relative pressure of gases or liquids to less than or equal to $\pm 0.5\%$ accuracy.
5. Flow rates from 0.12 to 23,275 scfm with an accuracy of $\pm 3\%$ can be measured with METPOINT FLM flow sensors.

METPOINT® Instrumentation

The precise measurement of humidity, hydrocarbons, flow, temperature, and pressure provide the foundation for various analyses, documentation, and decisions as they relate to compressed air systems. Potential overload (e.g. excessive air velocity) or malfunctions can be detected early, and quickly and reliably, which allows for the most precise and economical optimization of all plant components. The use of superior quality, industrial grade measurement equipment eliminates all the guesswork.

Product Family



Monitoring / Data Logging



Sensors



Mobile Solutions



Click or scan to watch on



Dew Point Monitoring



Click or scan to watch on



Flow Monitoring



Click or scan to watch on



Oil Vapor Monitoring

All of this collected data is then finally either read-out via a USB storage device, stored in the internal memory of the display, or routed through available software options once integrated into your local network.

METPOINT BDL Connect Basic features user-friendly analysis functions, graphical, and tabular displays with easy conversion into Microsoft's Excel format.

The key distinction is that BDL Connect Basic is designed to be a single source, point-to-point software between one METPOINT display and a computer. The software is compatible with the optional Compressed Air Analyzer plug-in that offers users the ability to measure compressor energy consumption, flow rate consumption, and perform leakage calculations, which are done during production off-load times creating a central hub for complete plant data capture and analysis.



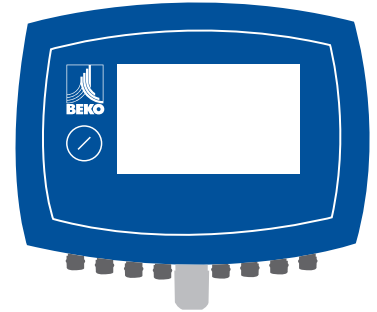
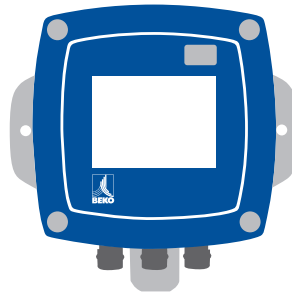
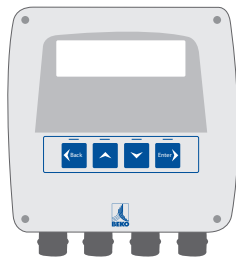
BDL Connect Software



METPOINT® Multi-Function Displays

from one to 12 sensor connections, with or without data logging capability

- › Fully expandable, future-proof
- › Wall mountable
- › Multi-voltage power supply
- › Connection Cable
- › USB interface

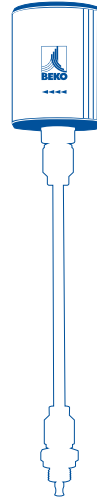


METPOINT® Displays	DD081 ECONOMY	BDL	BDL XL
Housing Dimensions (HxWxD)	4.65" x 3.62" x 3.66"	7.09" x 6.54" x 4.53"	9.80" x 13.74" x 4.29"
Housing Material	ABS plastic	Powder-coated aluminum, polyester front faceplate	Powder-coated aluminum, polyester front faceplate
Housing Protection Standard	IP 65	IP 44	IP 65
Connections	4 x M12 plastic connections for sensor, power supply and alarm relays	7 x M12 x 1.5 nickel-plated brass connections for sensor, power supply and alarm relays	16 x M12 x 1.5 nickel-plated brass for sensor, power supply and alarm relays, 1 x RJ 45 Ethernet connection
Sensor Inputs	1 analog sensor input	Base model is either 2 analog or 2 digital sensor inputs, both are expandable to one of the following configurations: 2 analog and 2 digital, 4 analog or 4 digital sensor inputs Max. number of sensor inputs per unit: 4	4 / 8 / 12 sensor input for analog and digital sensors can be freely connected (see options) Digital sensors for dew point and consumption with SDI interface FLM / DPM series sensors RS 485 / Modbus RTU digital remote sensors, other bus systems are possible on request Analog sensors for pressure, temperature, current probe pre-configured Analog remote sensors 0 / 4 - 20 mA, 0-1 / 10 / 30V, pulse, Pt 100 / Pt 1000, KTY
Data Logging	-	Up to 1,000,000 values / recording interval: min. 1 sec., max. 59 min. and 59 sec.	Infinite and fully customizable
Power Supply for Sensors	24 VDC, max. 25 mA per sensor	24 VDC, max. 25 mA per sensor	24 VDC, max. 130 mA per sensor, integrated power supply unit max 24 VDC, 25W In version 8 /12 sensor inputs 2 integrated power supply units each max. 24 VDC, 25 W
Interface Type	4-key keypad, on-device only, no software	USB stick, USB cable, Ethernet / RS 485 Modbus RTU / TCP, SDI other bus systems on request, integrated web server (all optional)	USB stick, USB cable, Ethernet / RS 485 Modbus RTU / TCP, SDI other bus systems on request, integrated web server (optional)
Outputs	Single connection of 4-20 mA signal of dew point or consumption sensor (max. burden <500 ohm) 2 alarm relays, 230 VAC, 3 A	Connection of 4-20 mA signals of dew point and consumption sensors (max. burden <500 ohm) 2 alarm relays, 230 VAC, 3 A	3 / 4 relay (changeover contact 230 VAC, 6 A) alarm management, relay freely programmable, summary alarm Analog output, pulse at sensor with its own signal output looped through, e.g. DPM / FLM series sensors
Memory Card	-	up to 4 GB	Memory size 2 GB SD memory card standard, optional up to 4 GB
Display Type	½" height, red LED, 7 segment, 5 digit display	Full color, 3.5" TFT touchpanel transmissive, with graphics, charts and statistics	Full color, 7" TFT touchpanel transmissive, with graphics, charts and statistics
Operating Temperature	14 °F to 140 °F	33 °F to 122 °F	33 °F to 122 °F
Storage Temperature	-4 °F to 176 °F	-4 °F to 158 °F	-4 °F to 158 °F

METPOINT® Sensor Technologies

for the measurement of all critical process parameters

- › Custom configurations available
- › Temperature sensor also available
- › Amperage sensor also available



METPOINT® Sensors	SD Series Dew Point Sensors	FS Series Flow Sensors	SP Series Pressure Sensors
Measuring Principle	Capacitive polymer sensor	Calorimetric measurement	Stainless steel thin-film technology
Measured Variables	Dew point, temperature and humidity	Flow rate, velocity and total consumption	Relative pressure
Intended Measurement Medium	Compressed air or gases	Compressed air or gases	Gases or liquids
Measurement Range	-76 to +86 °F td -22 to +158 °F measured gas temperature 0 to 100% rH	0.12 to 23,275 scfm	0 to 232 psig standard (0 to 870 psig optional)
Measuring Accuracy	± 3.5 °F at -40 °F PDP ± 0.9 °F at +15 to +86 °F	± 1.5% of reading	≤ ± 0.5%
Max. Operating Pressure	725 psig	232 psig standard (725 psig optional)	725 psig
Operating Temperature	-22 to +158 °F	Housing: -22 to +176 °F Sensor probe: -22 to +284 °F	-40 to +185 °F
Storage Temperature	-40 to 185 °F	-	-40 to 185 °F
Connection Size Type	¼" Quick Disconnect Adapter	½" BSP (ISO 228/1)	¼" BSP
Analog Output	4...20 mA	4...20 mA	4...20 mA
Digital Output	Yes	Yes	No
Protection Class	IP65	IP65	IP67

METPOINT® Hydrocarbon Sensor Technologies

pre-configured units with available standalone display and compatible mobile test station

- › Continuous reference air sample
- › Wall mountable
- › Self-calibrating device
- › Full data log capability
- › Network ready

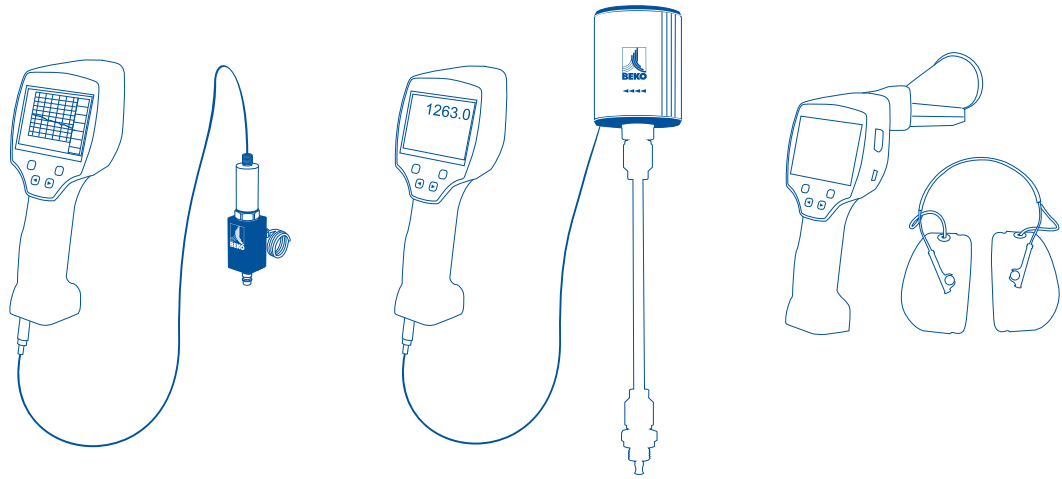


METPOINT® Oil Vapor Sensors	OCV Compact
Dimensions (HxWxD)	18.2" x 16.1" x 6.4"
Housing Protection Standard	IP 54
Connection	1/8" female thread, ISO 228-1 standard
Max. Operating Pressure	232 psig High pressure option available up to 580 psig
Power Supply	100-240 VAC, 1 Phase, 50-60 Hz ±10%
Outputs	- 2 wire 4-20mA analog output - RS 485 ModBus RTU - 1 Normally open alarm contact
Compatible with BDL Series Displays	Yes
Intended Measurement Medium	Compressed air, free of aggressive, corrosive, caustic, toxic, flammable, or combustible materials or substances
Measuring Principle	Photoionization detection
Measurement Parameter	Residual oil content in mg/m ³ relative to 14.5 psig, 68 °F, and 0% relative humidity, according to ISO 8573-1
Measured Substances	Polyalphaolefins, aromatics, hydrocarbons, aliphatic hydrocarbons, and functional hydrocarbons
Measuring Range	≤ 0.01 to 2.50 mg/m ³
Measuring Accuracy	≤ 0.01 to 0.5 mg/m ³ ±0.003 mg/m ³ ≥ 0.5 to 1.0 mg/m ³ ±0.10 mg/m ³ ≥ 1.0 to 2.5 mg/m ³ ±0.10 mg/m ³
Detection Limit (residual oil)	0.001 mg/m ³
Measuring Gas Humidity	≤ 40% relative humidity, maximum pressure dew point +50 °F (no liquid)
Compressed Air Temperature at Inlet	41 to 122 °F
Ambient Temperature	41 to 113 °F and ≤ 75% relative humidity

METPOINT® Mobile Solutions

accurate measurement of all relevant compressed air parameters on-the-go

- › Take with you anywhere
- › Rechargeable battery
- › Handy USB connections
- › Same accurate sensor technology

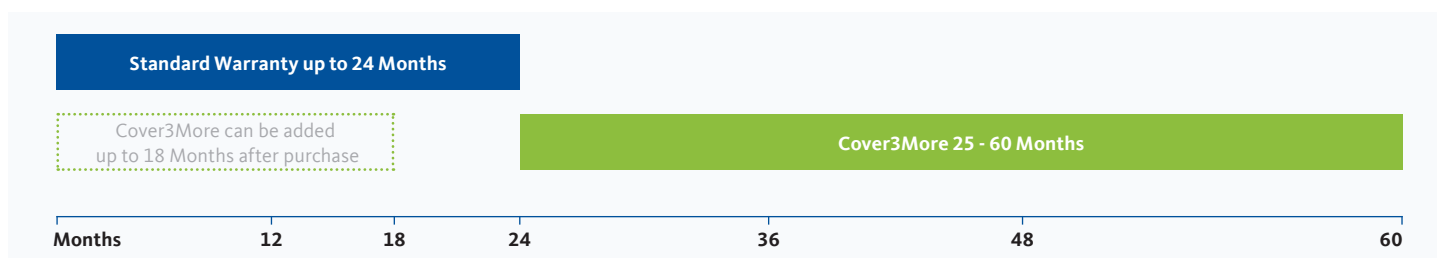


METPOINT® Mobile Solutions	DPM Mobile Dew Point Monitor	FLM Mobile Flow Monitor	CID Mobile Leak Detector
Measuring Principle	Capacitive polymer sensor	Calorimetric measurement	Ultrasonic detection
Measured Variables	Dew point	Flow rate	Leakage
Intended Measurement Medium	Compressed air or gases	Compressed air or gases	Compressed air or gases
Measurement Range	-76 to +86° FTD	0.12 to 16,100 scfm	up to 40 kHz
Measuring Accuracy	± 3.5 °F at -40 °F PDP ± 0.9 °F at +15 to +86 °F	± 1.5% of measured value	± 1 kHz
Max. Operating Pressure	232 psig (optional 725 psig)	232 psig	-
Digital Connection	Integrated USB	Integrated USB	Mini USB interface

+3
Years on all
Products

ask your
**sales
representative**
for complete details
and extend your full
warranty today

At a Glance



Cover3More is available on all our product lines

DRYPOINT® RA	Refrigerant Air Dryers	BEKOMAT®	Zero Air Loss Drains
DRYPOINT® X / AC	Desiccant Air Dryers	QWIK-PURE®/ÖWAMAT®	Oil-water Separators
DRYPOINT® M	Membrane Air Dryers	METPOINT®	Instrumentation
CLEARPOINT®	Filters and Water Separators	BEKOKAT®	Hydrocarbon Removal Systems

How it Works

1. Select the product or products that you wish to cover with the extended warranty.
2. Simply add 8% to the net price of each product or call your sales representative if you need help calculating your final net price.
3. Include this information as a line item with your purchase order or purchase the warranty extension up to 18-months post-sale.

What we need from you: It's not much. In fact, if you are purchasing the Cover3More extended warranty with a new equipment purchase, all you have to do is include a line item on your order indicating which items you wish you cover, and we will take care of the rest. If you happen to be adding coverage to a product you've already taken delivery of, then all we need is the company name and contact information of the original purchaser, the product model number of the product to be covered, serial number, and original purchase order number or BEKO Technologies invoice number, and we will apply coverage appropriately. **Please feel free to contact us at +1 (800) 235-6797 to get started.**

All maintenance procedures, including filter element changes, must be carried out in accordance with the manual in order to maintain any warranty.

■ Compare

We give you more: In addition to a robust, standard 2-year warranty on BEKO Technologies products, we offer our customers the option of extending the standard warranty even further with the **Cover3More** program – a low cost, all-encompassing, and simple warranty extension program.

- › Extends the standard factory warranty for an additional 3-years
- › May be purchased at any time up to 18-months post-sale
- › No hassle and easy to calculate without any hidden costs

Secure your future with a minimal investment. The **Cover3More** extended warranty program from BEKO Technologies ensures that your investment is covered for a total of 5-years at a nominal cost.

- › 2-year standard warranty covers parts and labor
- › 3-year extended warranty covers parts only, no parts restrictions
- › Significantly reduces your risk of having unexpected costs

Reliability you can count on: With the Cover3More extended warranty program, BEKO Technologies not only lengthens the standard warranty period by 3-years from the installation date, but also draws on the company's vast compressed air industry experience to quickly resolve any product problems you may experience in the least disruptive way possible, thereby keeping downtime to an absolute minimum. Should a repair be required, it will be handled by qualified, authorized personnel, and only original parts will be used.

What's in the fine print: The optional 36-month warranty extension (i.e. Cover3More) is a limited extended warranty that covers parts only from months 25-60.

However, all of the aforementioned installation, performance, and quality requirements must still be met in order to maintain extended warranty coverage. Failure to do so will render all warranties null and void.

The limited extended warranty coverage may be purchased and applied to any of the BEKO Technologies product lines included in the scope of the Cover3More extended warranty program from the original date of purchase from BEKO Technologies to 18-months thereafter.

Extended warranty coverage may not be purchased during the final 6-months of the standard warranty coverage, which are months 19-24 from the date of shipment or at BEKO Technologies' discretion, the date of installation.

The purchase price of the Cover3More limited extended warranty is not prorated and the current published purchase price is always applied.

Should the extended warranty coverage be purchased post-delivery or post-sale, then the serial number of all products to which the warranty shall be extended must be provided to BEKO Technologies at the time of purchase of the extended warranty.

Reliable | Efficient | Innovative

What can we do for you?



BEKO TECHNOLOGIES CORP.
900 Great Southwest Pkwy SW
Atlanta, GA 30336
USA
Phone +1 (404) 924-6900
www.bekousa.com

